

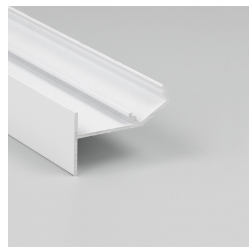
# LED PROFILE GLOW12 UP A1C 2000 WHITE PAINTED /PLASTIC BAG



Spackle in



Architectural



- for finishing suspended ceilings
- a gentle glow of light on the actual ceiling
- easy and aesthetically pleasing finish to the edges
- profile for finishing of plasterboards with a minimum thickness of 12,5 mm



EU industrial designs



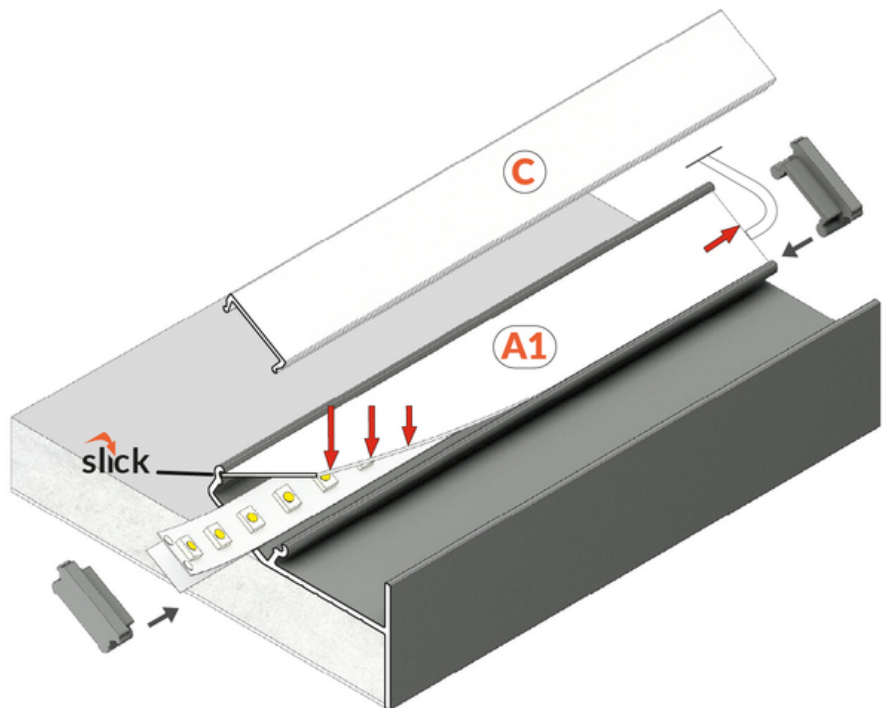
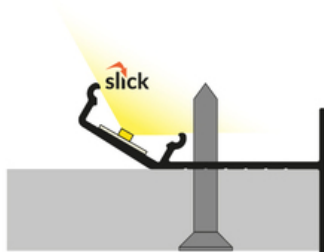
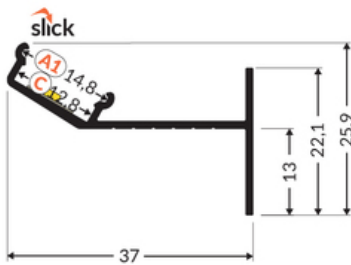
CE



Made in Poland



Buy product





## Basic Informations

EAN: 5901597236849

Index: K8000201

Material: aluminium

Color: white painted

Length [mm]: 2000

Weight [kg]: 0.47

Net weight [kg]: 0.012

Country of origin: PL

Measurement unit: qty

Product packaging dimensions [mm]: 2000 x 37 x 25,9

Bulk packing [qty]: 20

Master packaging type: Carton

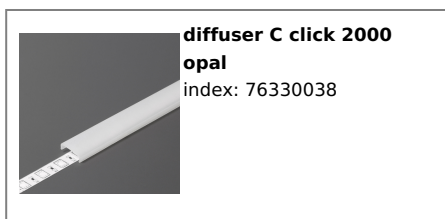
Product with gross packaging weight [kg]: 10.46

## AVAILABLE VARIANTS

1000 mm, 2000 mm, 3000 mm, 4050 mm

## Matching elements

## DIFFUSERS

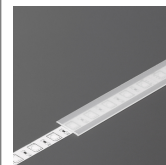




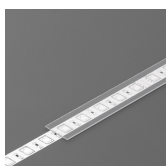
**diffuser C click 20m reel  
opal /pack**  
index: 76360038S



**diffuser A1 slide 2000  
opal**  
index: J6000938



**diffuser A1 slide 2000  
frosted**  
index: J6000939



**diffuser A1 slide 2000  
transparent**  
index: J6000916

---

## END CAPS



**end cap GLOW12 grey  
[20pcs]**  
index: K7999922